

2004-01-14

IEEE

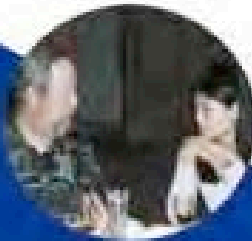
ZTE

802.16 Working Group Session # 31

Shenzhen China

2004.05.17 – 2004.05.20

ZTE Corporation



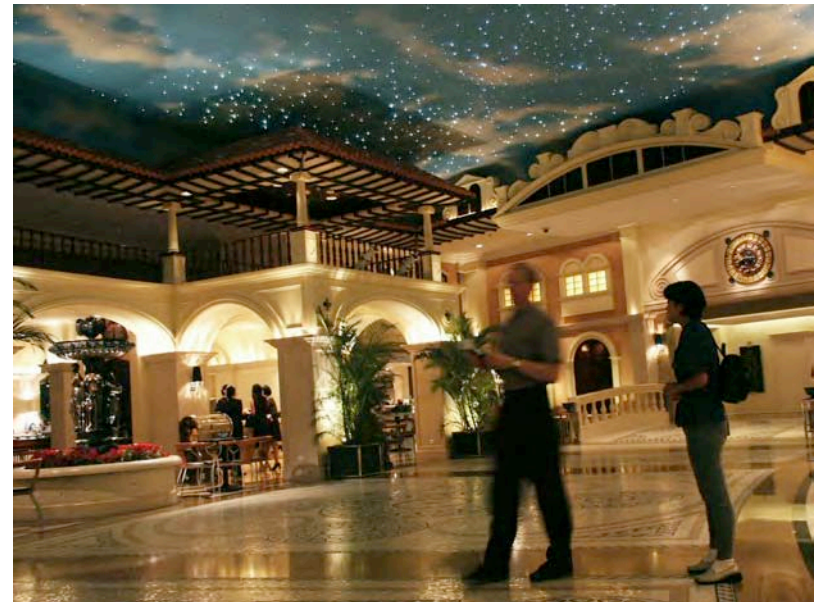
Session # 31 at Shenzhen , China

- ZTE requested opportunity to host IEEE 802.16 Working Group Session # 31 at Shenzhen, China
 - Request presented to the Working Group during Session # 28 at Albuquerque, NM
 - The WG allowed ZTE request for hosting the session
- Meeting Dates and Venue confirmed
 - Meeting Dates: May 17-20, 2004
 - Venue: Crowne Plaza Hotel, Shenzhen, China



Meeting Venue

- **Crowne Plaza Hotel
SHENZHEN**
Overseas Chinese Town,
Shennan Road
SHENZHEN, 518053
CHINA-PEOPLES REPUBLIC
Tel: 86-755-26936888
Fax: 86-755-26936999
Email: RSVN.ROOMS@CPSZ.COM
- More information on the hotel:
<http://www.ichotelsgroup.com/h/d/cp/1/en/hd/SZXNS>
- World class hotel with most modern personal and meeting facilities
 - Located in southwest of Shenzhen city, next to well known theme parks such as Windows of the World, Splendid China and China Culture village
 - About 25 miles from Shenzhen Airport and 50 miles from Hong Kong International Airport
- Discounted room rate of U.S. \$92 per day + 15% surcharge
 - Includes breakfast for one, additional may be purchased at check-in
- Discounted hotel room rate available from May 14, 2004 till May 23, 2004





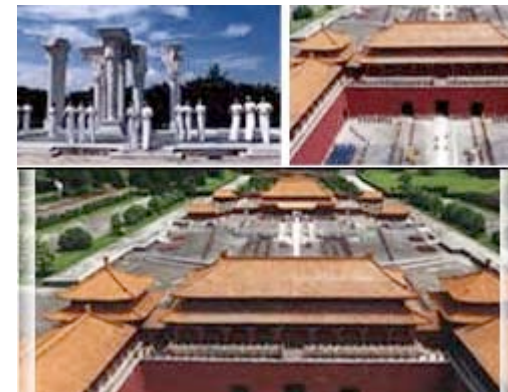


Theme Parks in hotel vicinity ...

- Hua-Chow City (Overseas Chinese Town) located in ShenZhen Bay area is minutes from the meeting hotel
 - This 4.8 sq-km area contains four theme parks with more than 6 million tourists visiting every year
 - Other than the theme parks, there are culture center, colleges, parks, shopping centers as well as hotels in this area

Theme Parks in hotel vicinity contd...

- Windows of the World
 - This theme park displays the historical stories, natural scenes and folk dancing in the world
- Splendid China
 - This is the world's largest miniature theme park. It displays Chinese historical culture and scenery of 5000 years



Theme Parks in hotel vicinity contd...

- Happy Valley
 - It occupies area of 350000 sq-m and combines culture and high tech in one park
 - It is the six-flag park in China
- Chinese Folk Culture Valley
 - This village collects arts and cultures of various regions in China in one place
 - The 24 sub-divisions in the village have been built based on the original designs of streets and buildings in China
 - The Folk dancing in the central theater carries the spirits of cultures of all the major regions in China





Visit to Chinese Culture Village





Attractions ...

- Shenzhen Attractions and distance from the meeting hotel:
 - Shekou Harbour Passenger Terminal (12 KM/ 7.46 MI)
 - Louhu Port (12 KM/ 7.46 MI)
 - China Folk Culture Village theme park (0.5 KM/ 0.31 MI)
 - Happy Valley theme park (0.1 KM/ 0.06 MI)
 - Safari Park (10 KM/ 6.21 MI)
 - China Hi-Tech Fair Exhibition Centre (4 KM/ 2.49 MI)
 - Xian Lake Botanical Garden (25 KM/ 15.53 MI)
 - Sea World (35 KM/ 21.75 MI)
 - Xiaomeisha Beach Park (35 KM/ 21.75 MI)
 - Dameisha Beach Park (32 KM/ 19.88 MI)
 - Window of The World theme park (0.1 KM/ 0.06 MI)
 - Splendid China theme park (0.5 KM/ 0.31 MI)

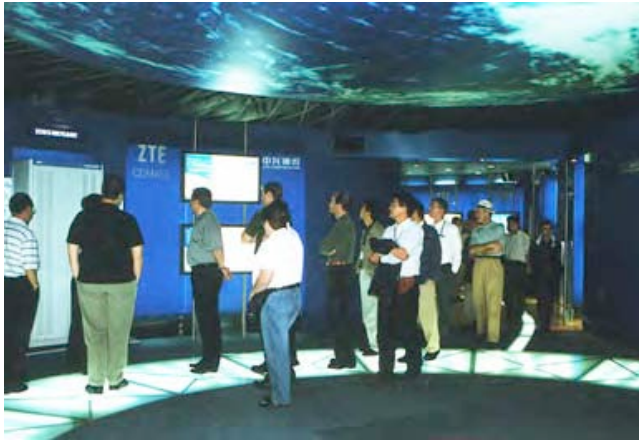


Registration Fee and Meeting Facilities

- Meeting Facilities
 - Meeting rooms with built-in screens and projection equipment
 - Additional projectors and screens, microphones to be procured locally by the host, as needed
 - WLAN network with Internet access to be set up in the meeting rooms
 - WLAN facilities with Internet access available in hotel lobby
 - High speed Internet access available in guest rooms

- Registration Fee
 - Registration fee of U.S. \$150 per participant
 - Covers meeting rooms, audio/visual and Internet communication facilities
 - VIP pass to ZTE Welcome Banquet (social) on Wednesday evening (May 19, 2004) including entertainment program and ZTE souvenir to the participants
 - Tour of ZTE World Headquarters on May 21, 2004 (Friday)

ZTE Tour and Banquet Some memories ...





Getting to Shenzhen, China

- Getting to Shenzhen, China
 - Visa needed for entry to China
 - Tourist Visa available for attending such business meetings
 - ZTE would provide invitation letters for those desiring to get Tourist/ Business Visa (more details on invitation letters from ZTE soon)
- Shenzhen easily reached via Hong Kong
- Other options are to fly in to Beijing or Shanghai, and then to Shenzhen
- ZTE to provide bus pick-ups and drop-offs between Hong Kong International Airport and Crowne Plaza Hotel on designated travel dates
- Regular bus and train services also available between Hong Kong airport and Shenzhen (approx U.S. \$ 25 one-way)
- Ferry service also available between Hong Kong and Shenzhen
- Taxi from Shenzhen Airport to meeting hotel recommended (approx U.S. \$15 one-way)



Others ...

- Others
 - Meeting being sought between IEEE LMSC and China SAC/MII for discussion of IEEE related issues
 - ZTE to provide logistics support and facilities for the meeting
 - ZTE hosting not limited to the meeting rooms, language interpreters, extended meetings over lunch/dinner etc., participation in ZTE Welcome Banquet, ZTE Headquarters visit etc.
 - Others as may be discussed with the participating parties
- More Details
 - More details on logistics and obtaining Visas to be made available to the 802.16 Working Group soon
 - ZTE has hosted similar sessions for the 3GPP2 and 3GPP, which have been much appreciated
 - 3GPP2 and 3GPP participants have brought in computing equipment, projectors, microphones, network equipment, power strips etc.



Some Reminiscences ...

11/1/61

This has been the most exciting TSC-3/SC/OP meeting experience for me. China is a land of enchantment and constant advancement. Shenzhen certainly represents these attributes.

The EYE staff have been most hospitable and shown great personal care in providing a wonderful experience for me. I feel very, very fortunate to have been here. I will cherish this experience deeply.

Sincerely
George Tornipseed
Chair of TSC-A
36992