

Project	IEEE 802.16 Broadband Wireless Access Working Group < http://ieee802.org/16 >	
Title	Clarify downlink burst profile change management	
Date Submitted	2004-11-01	
Source(s)	Chi-Chen Lee Tzu-Ming Lin Yu-Ren Yang Industrial Technology Research Institute, Computer and Communications Research Labs, Taiwan Bldg. 11, 195 Sec. 4, Chung Hsing Rd. Chutung, HsinChu, Taiwan 310, R.O.C.	Voice: 886-3-5914579 Fax: 886-3-5829733 mailto: jjlee@itri.org.tw mailto: TMLin@itri.org.tw mailto: yryang@itri.org.tw
Re:	IEEE P802.16-REVd/D5	
Abstract	This contribution introduces clarifications for DL burst profile change management procedures.	
Purpose	Adopt into P802.16d/D5 corrigenda	
Notice	This document has been prepared to assist IEEE 802.16. It is offered as a basis for discussion and is not binding on the contributing individual(s) or organization(s). The material in this document is subject to change in form and content after further study. The contributor(s) reserve(s) the right to add, amend or withdraw material contained herein.	
Release	The contributor grants a free, irrevocable license to the IEEE to incorporate material contained in this contribution, and any modifications thereof, in the creation of an IEEE Standards publication; to copyright in the IEEE's name any IEEE Standards publication even though it may include portions of this contribution; and at the IEEE's sole discretion to permit others to reproduce in whole or in part the resulting IEEE Standards publication. The contributor also acknowledges and accepts that this contribution may be made public by IEEE 802.16.	
Patent Policy and Procedures	The contributor is familiar with the IEEE 802.16 Patent Policy and Procedures < http://ieee802.org/16/ipr/patents/policy.html >, including the statement "IEEE standards may include the known use of patent(s), including patent applications, provided the IEEE receives assurance from the patent holder or applicant with respect to patents essential for compliance with both mandatory and optional portions of the standard." Early disclosure to the Working Group of patent information that might be relevant to the standard is essential to reduce the possibility for delays in the development process and increase the likelihood that the draft publication will be approved for publication. Please notify the Chair < mailto:chair@wirelessman.org > as early as possible, in written or electronic form, if patented technology (or technology under patent application) might be incorporated into a draft standard being developed within the IEEE 802.16 Working Group. The Chair will disclose this notification via the IEEE 802.16 web site < http://ieee802.org/16/ipr/patents/notices >.	

Clarify downlink burst profile change management

Chi-Chen Lee, Tzu-Ming Lin, Yu-Ren Yang

ITRI

Problem statement

The concept of adaptive PHY, e.g. dynamic adaptive modulation, is important to adjust the burst profile of each SS in DL and UL according to quality of the signal. However, there are several ambiguities in the procedures of DL burst profile change in IEEE P802.16-REVd/D5.

In IEEE P802.16-REVd/D5 “Figure 79 —Transition to a more robust burst profile” and “Figure 80—Transition to a less robust burst profile”, the SS must monitor DL data through two different DIUC while changing the DL burst profile. This scenario is reasonable only if the *CID used* is **not** enabled by burst profile for SC and SCa PHY (see Table 139 and Table 190). In the case of OFDM, OFDMA PHY and in the case of SC, SCa PHY that the *CID used* is enabled by burst profile, the SS’s basic CID is included in each DL-MAP_IE. Thus, the SS can check the DL-MAP for its basic CID and know what DIUC it should use. This design improves the energy efficiency of the SSs that have power consumption constraints. Due to the lack of consistency between this design and the procedures defined in specification, we provide two modified figures to clarify this issue.

We notice that DL burst profile management does not mention how the SS deals with the lost of the change request. However, the change request may be lost due to the contention or harsh mobile environment. Therefore, the additional flow chart (see Figure 81a) is proposed to make the change of DL burst profile more robust. The new timer T28 is designed for handling the lost of the DBPC-REQ or RNG-REQ during the change of DL burst profile. Note that the BS should send DL data at new DIUC or send the DBPC-RSP or RNG-RSP to the MSS before T28 times out.

Proposed changes

6.3.10.1 Downlink burst profile management

[Replace Figure 79 and Figure 80 with the following figures.]

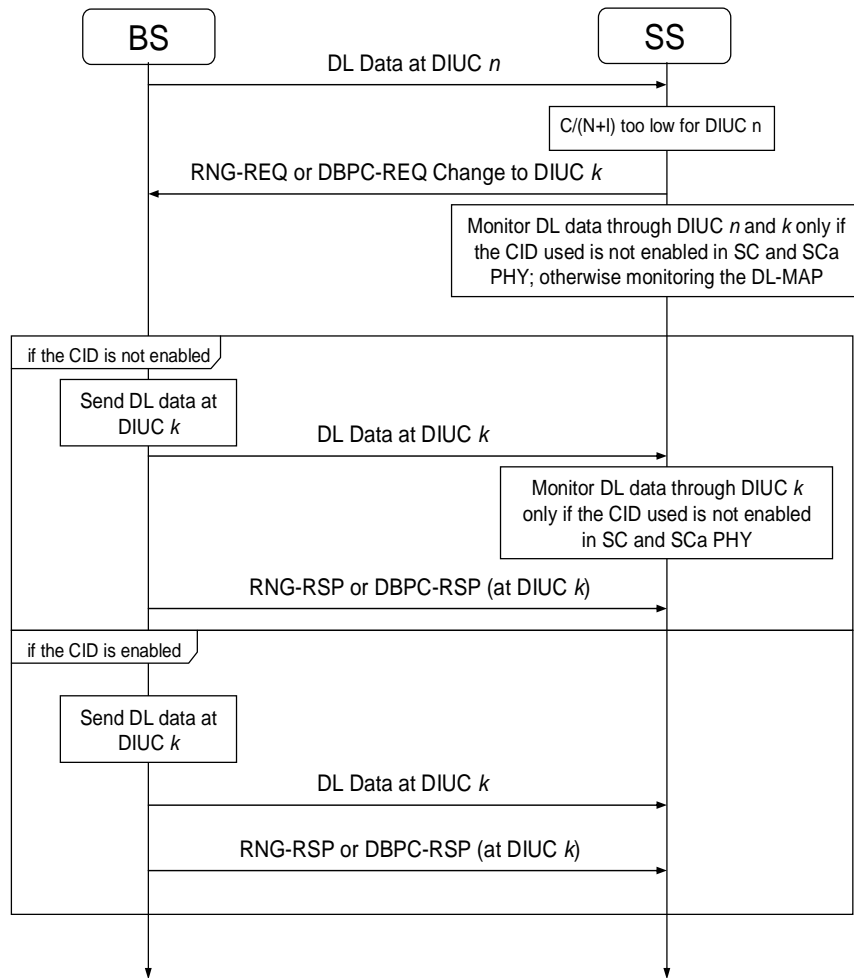


Figure 79—Transition to a more robust burst profile

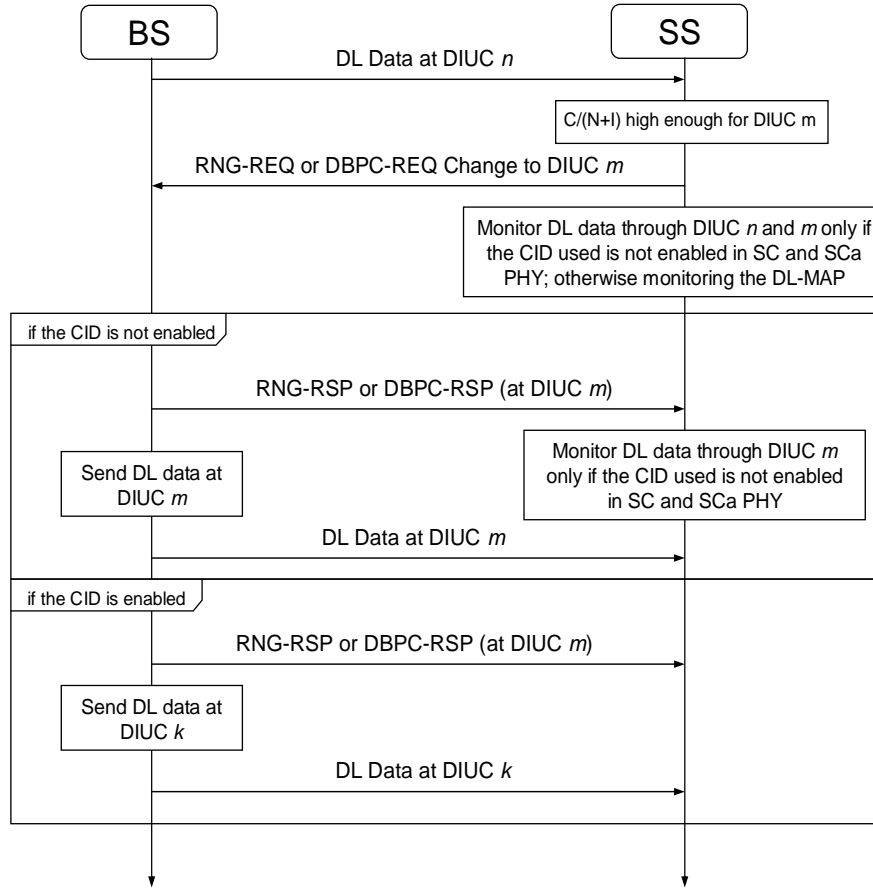


Figure 80—Transition to a less robust burst profile

[Insert new figure before “Figure 81 – Burst profile threshold usage” with the following figure.]

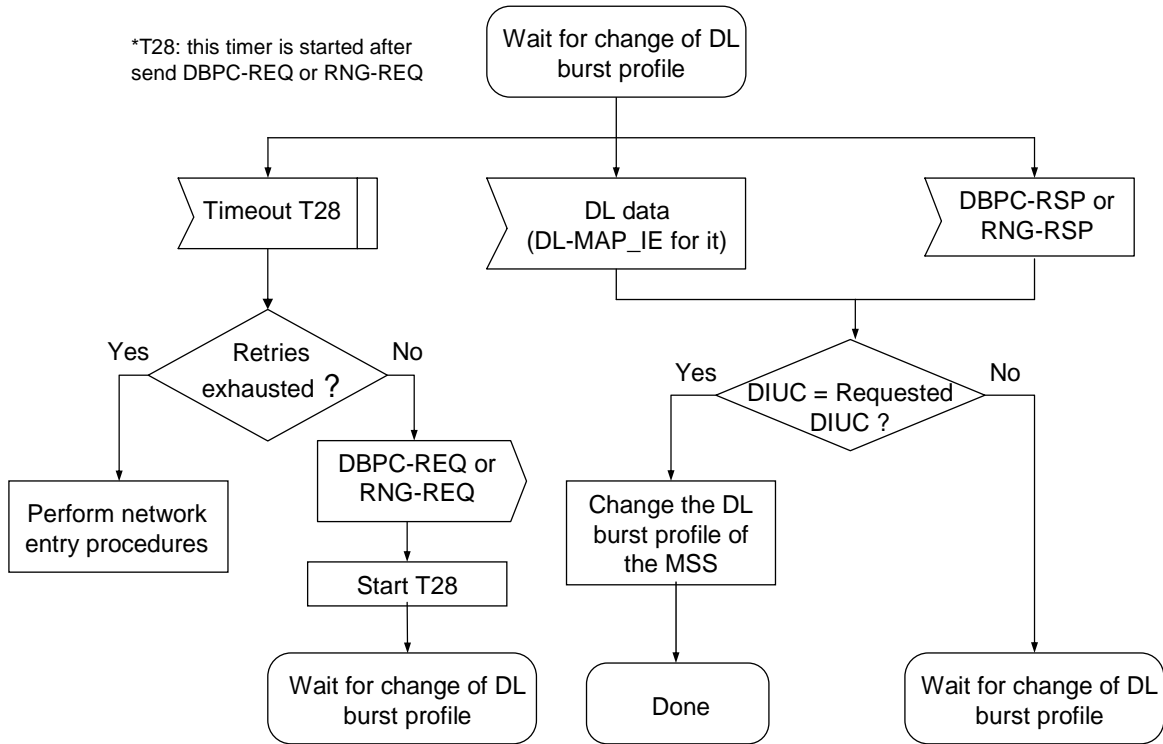


Figure 81a—Wait for response during change of DL burst profile—SS