

Project	IEEE 802.16 Broadband Wireless Access Working Group < http://ieee802.org/16 >	
Title	Clarification of relation between Classifier Rule and PHS Rule	
Date Submitted	2005-07-08	
Source(s)	Pieter-Paul Giesberts, Leon Zegers Motorola Marconibaan 57 3439 MR Nieuwegein Netherlands	Voice: +31-30-6001619 Fax: +31-30-6001660 mailto: giesberts@motorola.com
Re:	Call for Comments, Sponsor Ballot on IEEE P802.16-2004/Cor1/D3	
Abstract	Clarification of relation between Classifier Rule and PHS Rule	
Purpose	Adopt proposed changes	
Notice	This document has been prepared to assist IEEE 802.16. It is offered as a basis for discussion and is not binding on the contributing individual(s) or organization(s). The material in this document is subject to change in form and content after further study. The contributor(s) reserve(s) the right to add, amend or withdraw material contained herein.	
Release	The contributor grants a free, irrevocable license to the IEEE to incorporate material contained in this contribution, and any modifications thereof, in the creation of an IEEE Standards publication; to copyright in the IEEE's name any IEEE Standards publication even though it may include portions of this contribution; and at the IEEE's sole discretion to permit others to reproduce in whole or in part the resulting IEEE Standards publication. The contributor also acknowledges and accepts that this contribution may be made public by IEEE 802.16.	
Patent Policy and Procedures	The contributor is familiar with the IEEE 802.16 Patent Policy and Procedures < http://ieee802.org/16/ipr/patents/policy.html >, including the statement "IEEE standards may include the known use of patent(s), including patent applications, provided the IEEE receives assurance from the patent holder or applicant with respect to patents essential for compliance with both mandatory and optional portions of the standard." Early disclosure to the Working Group of patent information that might be relevant to the standard is essential to reduce the possibility for delays in the development process and increase the likelihood that the draft publication will be approved for publication. Please notify the Chair < mailto:chair@wirelessman.org > as early as possible, in written or electronic form, if patented technology (or technology under patent application) might be incorporated into a draft standard being developed within the IEEE 802.16 Working Group. The Chair will disclose this notification via the IEEE 802.16 web site < http://ieee802.org/16/ipr/patents/notices >.	

Clarification of relation between Classifier Rule and PHS Rule

Pieter-Paul Giesberts, Leon Zegers

Motivation

The standard currently doesn't give a complete, unambiguous description of the relation between Classifier Rule and PHS Rule. Although the intention may be clear, possible ambiguities should be prevented and/or resolved by clarification.

Proposed Text Changes

[Insert the following 4th paragraph to 6.3.14.3 on page 59, before line 63 of Cor1/D3]

A Classifier Rule uniquely maps a packet to its transport Connection. The Classifier Rule is associated to zero or one PHS Rules. When creating a PHS Rule the associated Classifier Rule Index is used as a reference. A PHS Rule is associated to a single Service flow. PHS Rules associated to the same Service flow are uniquely identified by their PHSI. The Classifier Rule uniquely maps packets to its associated PHS Rule.

[Change page 59, line 63 as follows and replace Figure 95]

Replace Change Figure 95 with the following figure by addition of "Transport" before "Connection":

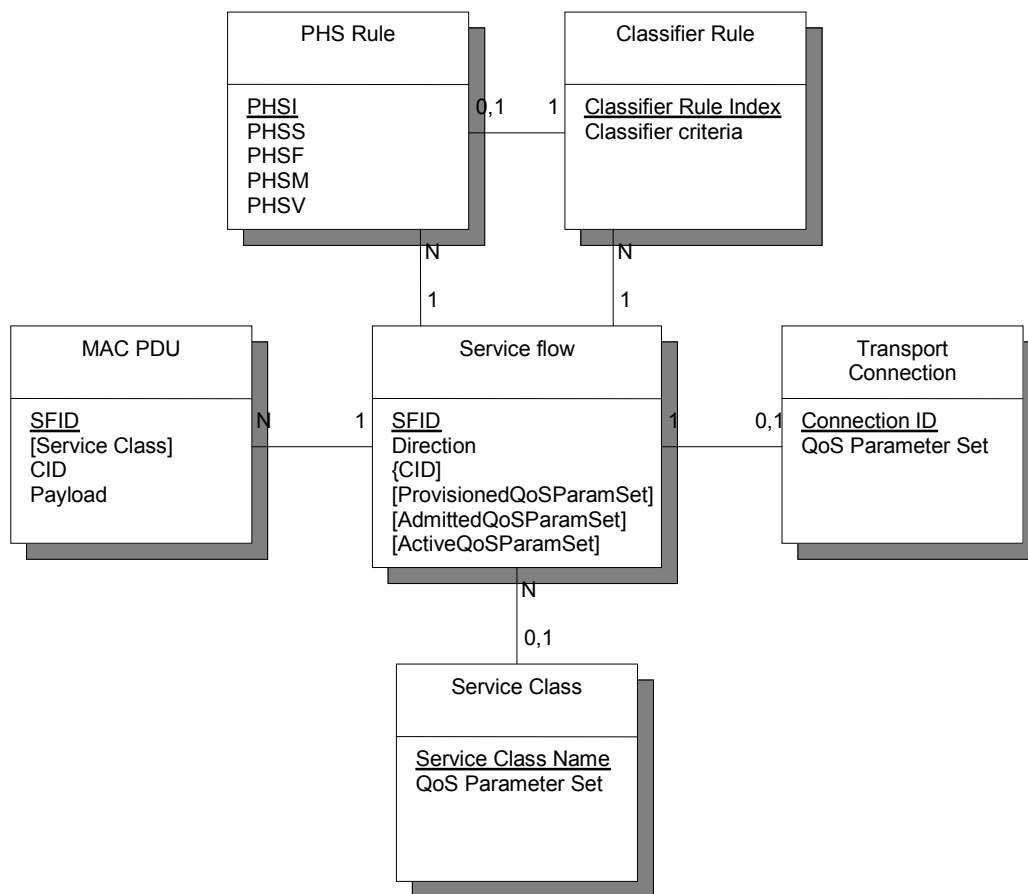


Figure 95 – Theory of Operation Object Model