

Project	IEEE 802.16 Broadband Wireless Access Working Group < <a href="http://ieee802.org/16">http://ieee802.org/16</a> >
Title	Correction of the Figure 61 - Initial ranging - SS (part 2)
Date Submitted	2006-07-07
Source(s)	Doohyun Sung <a href="mailto:Dh.sung@lge.com">Dh.sung@lge.com</a> LG Electronics
Re:	IEEE P802.16e-2005 and IEEE P802.16-2004 In response to call for maintenance change request (IEEE 802.16maint-06/018) issued on 2006-06-16.
Abstract	Network entry initialization: procedures after local parameter adjustment
Purpose	Adopt proposed changes
Notice	This document has been prepared to assist IEEE 802.16. It is offered as a basis for discussion and is not binding on the contributing individual(s) or organization(s). The material in this document is subject to change in form and content after further study. The contributor(s) reserve (s) the right to add, amend or withdraw material contained herein.
Release	The contributor grants a free, irrevocable license to the IEEE to incorporate material contained in this contribution, and any modifications thereof, in the creation of an IEEE Standards publication; to copyright in the IEEE's name any IEEE Standards publication even though it may include portions of this contribution; and at the IEEE's sole discretion to permit others to reproduce in whole or in part the resulting IEEE Standards publication. The contributor also acknowledges and accepts that this contribution may be made public by IEEE 802.16.
Patent Policy and Procedures	The contributor is familiar with the IEEE 802.16 Patent Policy and Procedures < <a href="http://ieee802.org/16/ipr/patents/policy.html">http://ieee802.org/16/ipr/patents/policy.html</a> >, including the statement "IEEE standards may include the known use of patent(s), including patent applications, provided the IEEE receives assurance from the patent holder or applicant with respect to patents essential for compliance with both mandatory and optional portions of the standard." Early disclosure to the Working Group of patent information that might be relevant to the standard is essential to reduce the possibility for delays in the development process and increase the likelihood that the draft publication will be approved for publication. Please notify the Chair < <a href="mailto:chair@wirelessman.org">mailto:chair@wirelessman.org</a> > as early as possible, in written or electronic form, if patented technology (or technology under patent application) might be incorporated into a draft standard being developed within the IEEE 802.16 Working Group. The Chair will disclose this notification via the IEEE 802.16 web site < <a href="http://ieee802.org/16/ipr/patents/notices">http://ieee802.org/16/ipr/patents/notices</a> >.

## Correction of the Figure 61 - Initial ranging - SS (part 2)

*Doohyun Sung*  
*LG Electronics*

### 1. Motivation

The lines from box to box have no arrows in Figure 61.

The procedures after the MS fails the adjustment are not appropriate.

### 2. Details

After the MS receives RNG-RSP with continue or success status, it tries to adjust local parameters.

If the MS fails it sends RNG-REQ with anomalies to the BS. Then it has to wait for new RNG -RSP in response to RNG-REQ which has been just transmitted. The procedure for waiting for RNG-RSP is needed.

Proposed solution: Replace all lines with arrowed lines and add a new box:

Remove a line from box "Send RNG-REQ with anomalies" to "Continue/ Success?". Add a new box with "Wait for RNG-RSP". Then connect with box "Send RNG-REQ with anomalies".

### 3. Text changes

1) [Replace Figure 61 with the following figure:]

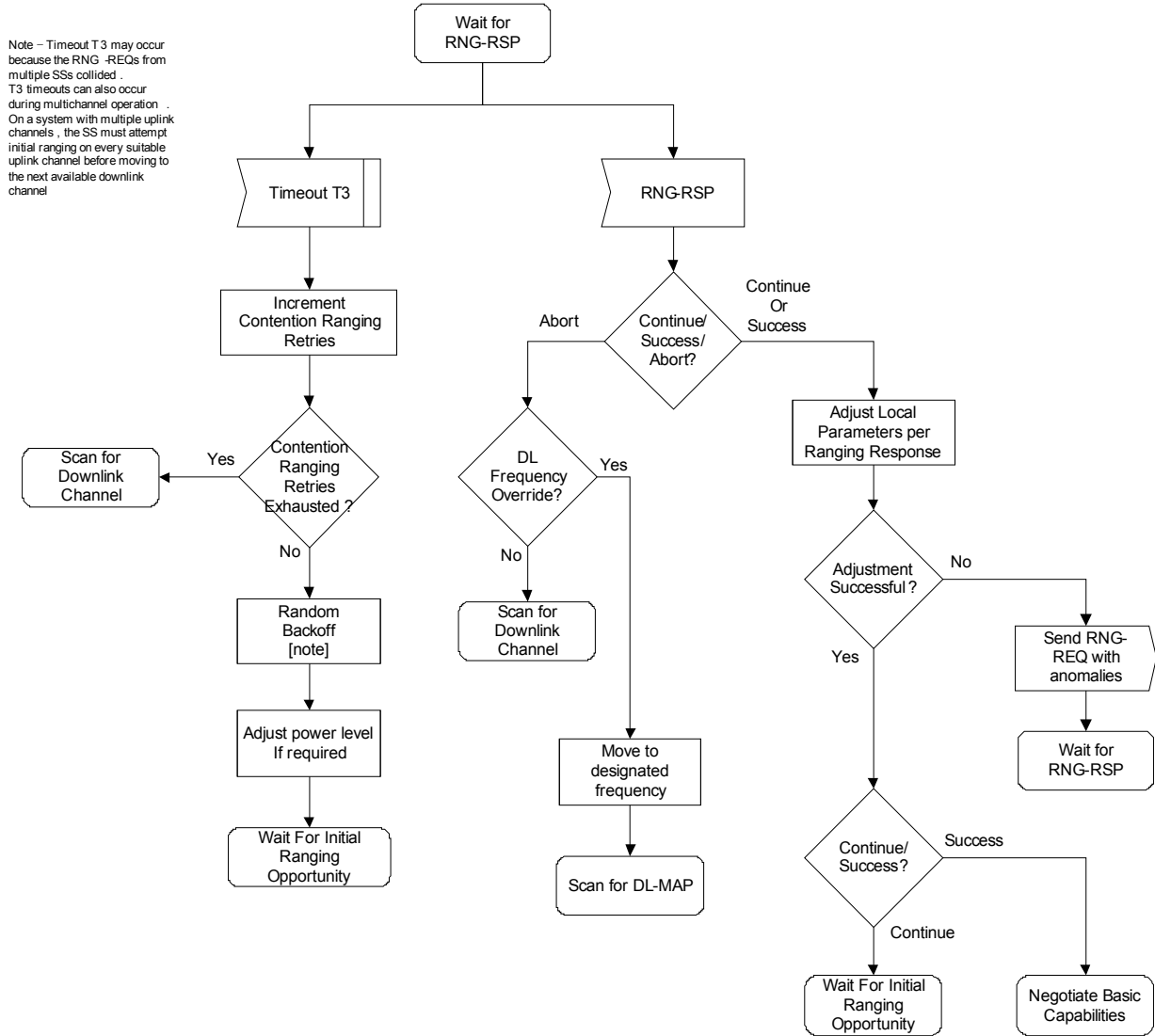


Figure 61 – Initial Ranging – SS (part 2)